

Residents who receive this leaflet will still be part of the local area known as Folkestone & Hythe District Council, living in the wards of North Downs East and North Downs West.

Folkestone & Hythe District Council will still collect council tax and provide local services for this area.

Elections for Folkestone & Hythe District Council and any parish or town council in this area will take place as normal and will continue to form part of the Folkestone & Hythe District Council area.

It is only the Parliamentary constituency which is changing. The district council area will be covered by two members of Parliament.

The Boundary Commission for England is responsible for carrying out the changes. You can find out more information about the consultation process and the other changes in Kent by visiting bcereviews.org.uk.



YOUR VOTE MATTERS DON'T LOSE IT



Apply to register

If you do not think you are registered, or have moved house recently, you can apply to register to vote online at gov.uk/register-to-vote or contact us on the phone number below, to request a paper application form.

Ways of voting

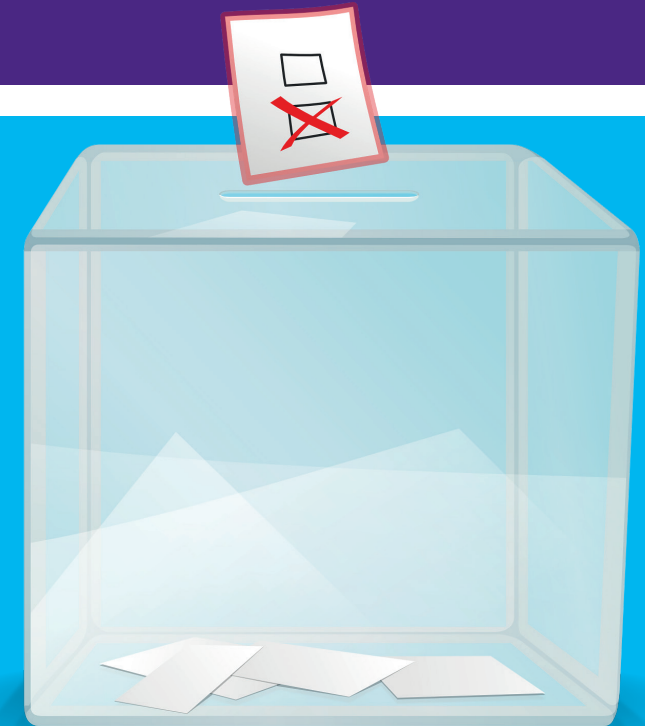
Registered voters can vote in person at a polling station, via postal vote or with an appointed proxy (where someone votes on your behalf). More details on the different ways of voting can be found on our website at folkestone-hythe.gov.uk/elections/register-vote.

Remember! If you vote at a polling station, you will need to provide an acceptable form of photographic ID to be able to vote. A full list of acceptable forms of photo ID can be found on our website or on the back of your poll card that is sent out before an election.

Contact us

- ☎ 01303 853497
- ✉ elections@folkestone-hythe.gov.uk

Voting at the next General Election has changed





New Parliamentary boundary lines

From **November 2023** new boundary lines were made to balance the number of people voting for members of Parliament across England.

As a result, voters within the area shown on the map outlined in red will vote for a member of the Ashford Constituency at the next General Election.

Your poll cards, ballot papers and postal voting packs for the next General Election will all include the header:

- **Election of member of Parliament for the Ashford Constituency**

For example, a poll card heading will look like this:

Folkestone & Hythe District Council

Poll Card

Election of member of Parliament for the Ashford Constituency

To check if your home is in the new constituency visit the interactive map on our website using the QR code.

